

**SHARP®**

AR C 330



# color office network solutions

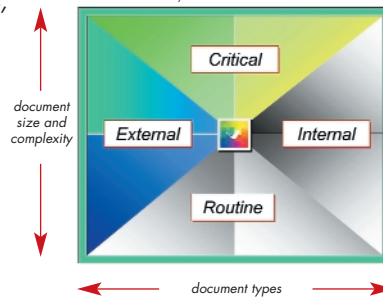
COPY | PRINT | NETWORK SCAN

DIGITAL COLOR  
**iMAGER™**

# exceptional performance for demanding color environments

Get the versatility you need—with the reliability you expect—with Sharp's new AR-C330 Color IMAGER. Designed to handle everything from **routine** black and white office documents to the most demanding, **color-critical jobs**, the AR-C330 IMAGER truly covers the spectrum of documents in graphic-intensive environments. With speedy 33 ppm copy/print speeds in both black and white AND color, cost-effective duty cycle, large paper capacity, optional finishing features, and an optional Fiery® print controller, this powerful multifunction copier/printer can easily produce proposals, reports, signage—practically anything your business needs to communicate—quickly and cost effectively. With stunning image quality, tabloid-size capability, built-in scanning and integrated easy-to-use software, the AR-C330 Color IMAGER will definitely enhance your business communications—and your productivity.

The AR-C330 IMAGER provides both color and b/w output that today's busy offices demand.



## FEATURES AT A GLANCE

### out-of-the-box copying

- 33 ppm color and b/w
- 600 x 600 x 8 (256 Levels)
- 5.5" x 8.5" up to 11" x 17"
- Stackless standard duplexing
- Three 500-sheet adjustable paper cassettes
- 50-sheet RADF
- Ample 1,600-sheet standard paper supply
- Prints on heavy paper stocks up to 140 lb. Index
- Advanced accounting/auditing

### optional network connectivity

- High performance 1 GHz Smart-RIP Fiery Controller
- 256 MB standard memory, upgradeable to 512 MB
- 40 GB Hard Disk Drive
- 10/100Base-T Ethernet with auto port and protocol switching
- Adobe Postscript Level 3 and PCL6C/5C
- Integrated Network Scanning and Remote Scan 5
- Secure printing and variable data printing
- Device Management Software: Sharp Administration (SNMP) and Fiery Software Utilities

### optional finishing

- 3,500-sheet Large Capacity Tray (LCT)
- 1,000-sheet Finisher
- 20-Bin Stapler-Sorter



Finish your printing with ease



The icon-driven LCD display guides users step-by-step through each function, making the AR-C330 Color IMAGER simple to operate.



With three 500-sheet cassettes, a 100-sheet bypass tray, and the optional 3,500-sheet LCT, the AR-C330 IMAGER's total online paper capacity is 5,100 sheets.



# powerful features and advanced flexibility for high-productivity users

## Productivity-enhancing features designed for today's business.

Designed for both black and white AND color-critical applications, the AR-C330 Color IMAGER delivers outstanding image quality with 600 x 600 dpi resolution and 256 gradations—for **ultra-crisp text** and **vivid, eye-catching color**. Convenient standard duplexing makes it easy to produce impressive reports, flyers, and more. The standard 1,600-sheet paper supply and 50-sheet RADF won't slow you down when it comes to lengthy jobs. Plus, the optional 3,500-sheet LCT can easily be added to bring the total online paper supply to 5,100 sheets. And for high-volume environments, you can add the 20-Bin Staple Sorter or a convenient document finisher for automated paper handling.

## Streamline your workflow with advanced network connectivity

With the optional high-performance EFI Fiery Controller, the AR-C330 Color IMAGER is transformed into a powerful workgroup printer that can blaze through graphic-intensive applications at an incredible 33 pages per minute in both black and white AND color. With incredible reliability and versatility, the AR-C330 Color IMAGER is ideal for mission-critical work. Targeted for high-productivity graphic-oriented environments, this 1 GHz/Smart-RIP Controller comes with Adobe Postscript 3 and PCL6C/5C, and integrates seamlessly into your existing network. The Transmeta processor generates high-performance network communications, and faster processing and printing of memory-intensive files. Versatile built-in scanning offers Scan to E-mail, Scan to FTP and Scan to Desktop—enabling users to easily share and store files.

## Enhance your workflow with easy-to-use, integrated software.

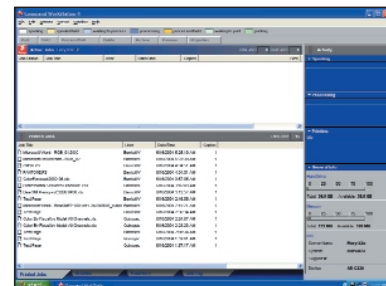
With advanced spooling, web tools, color correction, and variable data printing, Sharp's integrated **Administration software** makes it easy to manage your workflow or configure printer settings—right from your desktop.

Add more functionality to your workflow with Fiery's advanced printing solutions.

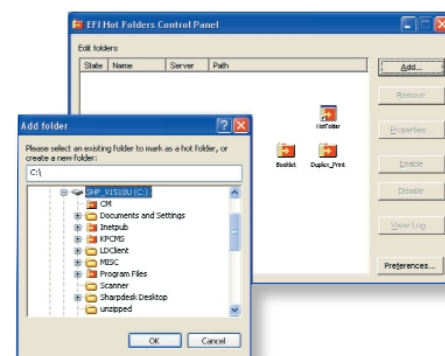
**Command Workstation™ 4.1** enables users to control job options, print queues, and monitor jobs from one centralized location. Includes Fiery WebTools™, Fiery FreeForm™, Downloader and Job Monitor. You can also add optional Fiery software for specialized applications including:

- DocBuilder Pro
- PrintShop Mail
- EFI Color Profile Kit
- EFI Densitometer
- Velocity

Designed specifically for the graphic arts industry, the **Graphic Arts Feature** option provides easy-to-use utilities that streamline workflow in busy production environments. With an intuitive interface, users can simplify and automate processes like trapping, color matching, and configuring settings for jobs. Ideal for corporate reproduction departments and prepress facilities, the AR-C330 Color IMAGER with the Graphic Arts Feature option increases overall efficiency, and provides greater color accuracy across a wide range of applications.



With Command Workstation, administrators can monitor print jobs for a variety of devices from one central screen.



EFI Hot Folders eliminate the repetitive task of configuring settings for multiple jobs.



Sharp's Administration software uses SNMP to gather information from the AR-C330 IMAGER.

# AR C 330 specifications

<b>Copy System:</b>	Dry, electrostatic transfer system
<b>Copy Sizes:</b>	Max. 11" x 17", min. 5-1/2" x 8-1/2"
<b>Maximum Copy Speeds: Color or Monochrome</b>	33 copies/min. (8-1/2" x 11") 22 copies/min. (8-1/2" x 11" R) 10 copies/min. (8-1/2" x 11" 140 lb. Index) 17 copies/min. (8-1/2" x 14") 15 copies/min. (11" x 17") 7 copies/min. (12" x 18")
<b>Display:</b>	LCD Touch Panel
<b>Continuous Copy:</b>	Max. 999 copies; subtractive counter
<b>Color First-Copy Time:</b>	9.4 seconds (from tray #1 or LCT)
<b>Warm-Up Time:</b>	Approx. 360 seconds
<b>Copy Ratio:</b>	Variable: 25 to 400% in 1% increments
<b>Fixed Presets:</b>	25%, 50%, 64%, 77%, 95%, 100%, 121%, 129%, 141%, 200%, 400%
<b>Copy Paper Feed:</b>	Three standard paper trays with automatic paper feed (500-sheets each); one bypass tray with 100-sheet automatic feed capability
<b>Duplexing:</b>	Standard
<b>Max Configuration:</b>	5,100 sheets
<b>Resolution:</b>	Reading: 600 dpi Writing: 600 dpi with 256 levels
<b>Required Power Supply:</b>	AC 120V, 60 Hz, 15 amperes
<b>Power Consumption:</b>	Max 1.5 kW
<b>Overall Dimensions:</b>	55-19/32" (W) x 27-3/8" (D) x 44-3/4" (H) (with options)
<b>Weight:</b>	Approx. 335 lbs. (152 kg)
<b>Operating Conditions:</b>	Temperature: 50°F to 86°F (10°C to 30°C) Humidity: 20% to 80%
<b>Optional Equipment:</b>	Document Cover (AR-VR2) Reversing Automatic Document Feeder (AR-RF1) Printing Finisher (AR-FN4) 20-BIN Staple Sorter (AR-SS2) 3,500-Sheet Large Capacity Tray (AR-LC9) Fiery® Controller (AR-PE3N)
<b>Copier Functions:</b>	APS, AMS, Auto Tray Switching, Preheat, Auto Shut-Off (Sleep), One Scan-Many Copies, Key Operator Program, Auditor Interface, Totals Counter, Color Image Stabilization System/Process Control

<b>Copying Functions:</b>	Job recall (up to 9 jobs), Copy Auditing (400 accounts), Margin Shift, Edge Erase, Center Erase, Dual Page Copy, Negative/Positive Reversal, Cover Insertion, Transparency Inserts, Single Color with Adjustments, Self Print, Background Suppression, Color Balance, RGB adjust, Brightness/Intensity/Contrast Control, Sharpness, Multi-Page Enlargement, Mirror Image, Centering, Photo Repeat, Image Repeat, Extra Size Copy, Anti-Counterfeiting System, Full-Bleed 11" x 17", Auto Calibration, Tone Enhancement
---------------------------	--

## Print Controller Specifications

<b>Print Controller:</b>	AR-PE3N (includes AR-PX5 power supply)
<b>CPU / HDD:</b>	TM 5900 1GHZ / 40 GB HDD
<b>Memory:</b>	Standard 256 MB (512MB Max)
<b>Interface:</b>	10/100Base-T Ethernet
<b>Page Language:</b>	Adobe PostScript 3, PCL6c/5c
<b>Protocol:</b>	TCP/IP, AppleTalk, SPX/IPX
<b>OS Support:</b>	Windows 98/Me/NT/2000/XP/2003 server Mac OS 9.X or later, OS X 10.1 or later
<b>System OS/Fiery System:</b>	Linux / System 5.5e
<b>Controller Features:</b>	Smart RIP, Rip-While-Print Function, Account Printing Confidential Print, Auditron (for Equitrac), Mixed size paper output
<b>Press Simulations:</b>	SWOP, DIC, Euroscale, Pantone
<b>Calibration Method:</b>	Color Cal
<b>Fiery Scan:</b>	Photoshop® plug-in, Scan to E-mail/FTP/IFAX, Scan to HDD
<b>Document Management:</b>	Command WorkStation 4.1 (PC) / Version LE (Mac)
<b>Fiery Utilities:</b>	Fiery WebTools, Fiery FreeForm 2.0, Fiery Downloader, Job Monitor
<b>Sharp Utility:</b>	Sharp Printer Administration
<b>Fiery Options:</b>	Fiery DocBuilder Pro, EFI Color Profile Kit, PrintShop Mail-Fiery, EFI Densitometer, Velocity, Data Erase
<b>Graphic Arts Options:</b>	Spot-On, Auto Trapping, Hot Folders

Design and specifications are subject to change without notice. Sharp is a registered trademark of Sharp Corporation. All other trademarks are property of their respective owners.

As an ENERGY STAR® Partner, SHARP has determined that this product meets the ENERGY STAR® guidelines for energy efficiency.



**Choosing the Right Model**  
AR C330 just right for your color critical jobs

AR-C330	
AR-C200P	
AR-C260P	
AR-BC320	
AR-BC260	
AR-M700N	

**SHARP ELECTRONICS CORPORATION**  
Sharp Plaza, Mahwah, NJ 07430-1163  
1-800-BE-SHARP  
[www.sharppusa.com](http://www.sharppusa.com)

